

Safety Camera Procedure via CD-R/RW

For models DNX5220/BT or DNX5240/BT Only

NB: These instructions suggest the use of third party software and database. Kenwood Electronics UK Ltd does not support, or accept liability for, this software.

In some countries the use of safety camera's are prohibited please check the legality of using any safety camera database in each country beforehand.

Downloading custom POI's (speed safety cameras)

The blue hyperlinks below are active please click on them to go to the relevant web pages.

Downloading custom POI's (speed safety cameras)

The first step is to download, and install, the free POI Loader software from Garmin's web-site here:

<http://www8.garmin.com/products/poiloader/>

Once installed the next stage is to register and subscribe to pocketgpsworld.com here:

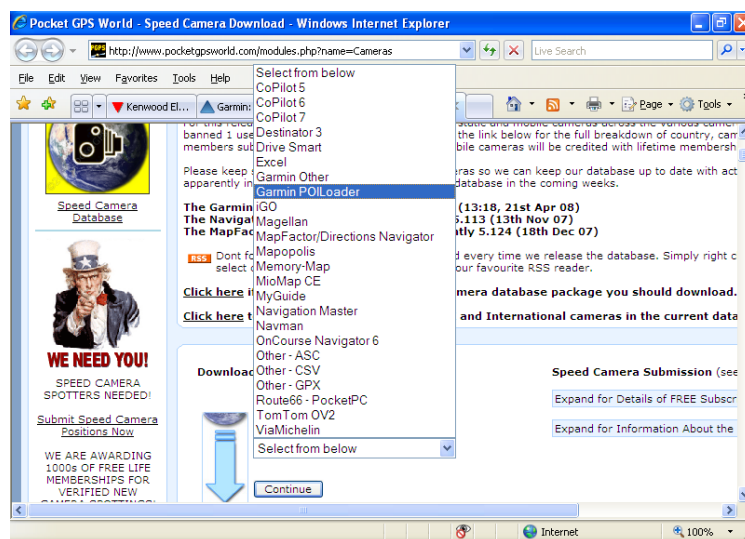
<http://www.pocketgpsworld.com/subscription.php>

Create a folder on your computer and give it a name such as '**Speed Camera Database**'

Download database from here:

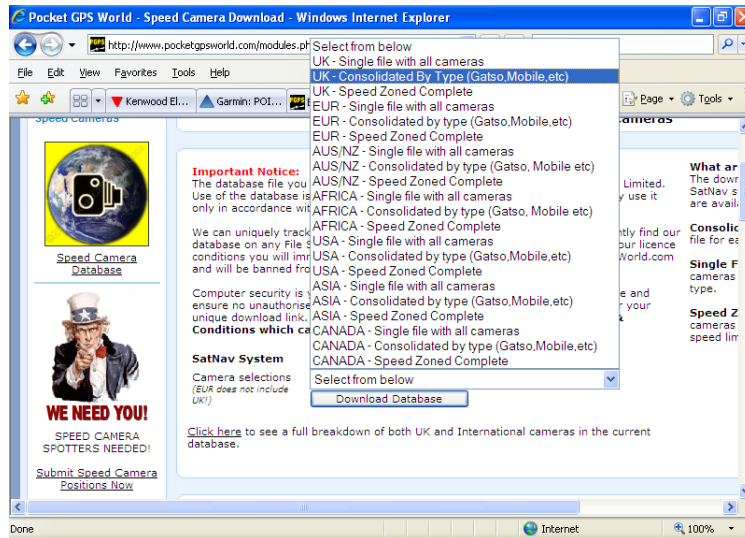
<http://www.pocketgpsworld.com/modules.php?name=Cameras>

When you get this screen:

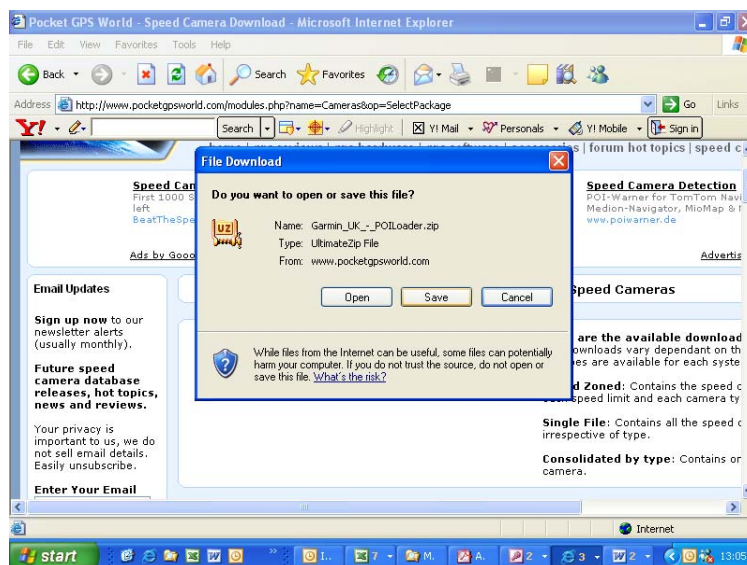


Select '**Garmin POI Loader**' from the list and then press '**Continue**'

Then select '**UK – Consolidated by type (Gatso etc)**'



Choose to save the file to your desktop or 'My Documents'.

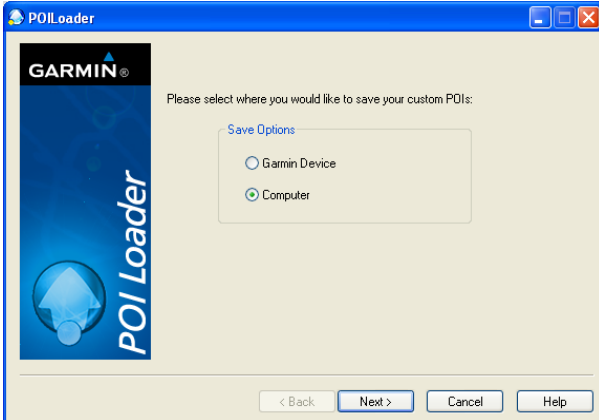


The downloaded file is a zip file. Right click on it and extract it to the folder that you created earlier – ie '**Speed Camera Database**' folder.

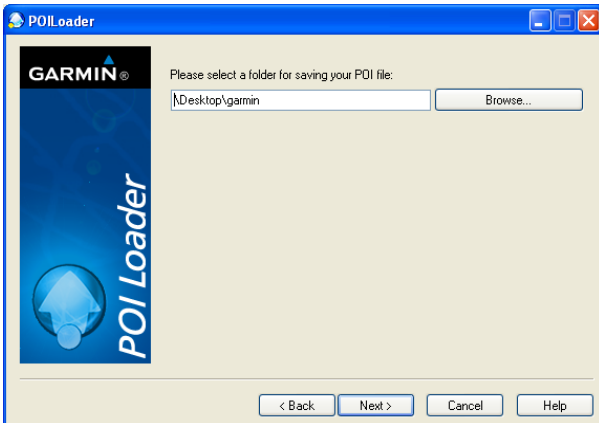
Transfer to CD-R/RW

On your desktop, create a folder called **'garmin'**

Run POI Loader



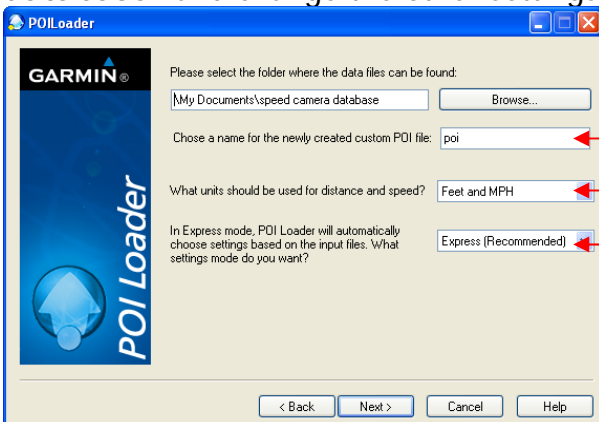
Select **"Computer"** then click **"Next"**



Then click **"Browse"** and select the **"garmin"** folder on your desktop

The next page will ask you where you have stored the data files.

Click **"Browse"** and select the new folder that you created earlier called **"speed camera database"** and change the other settings as below



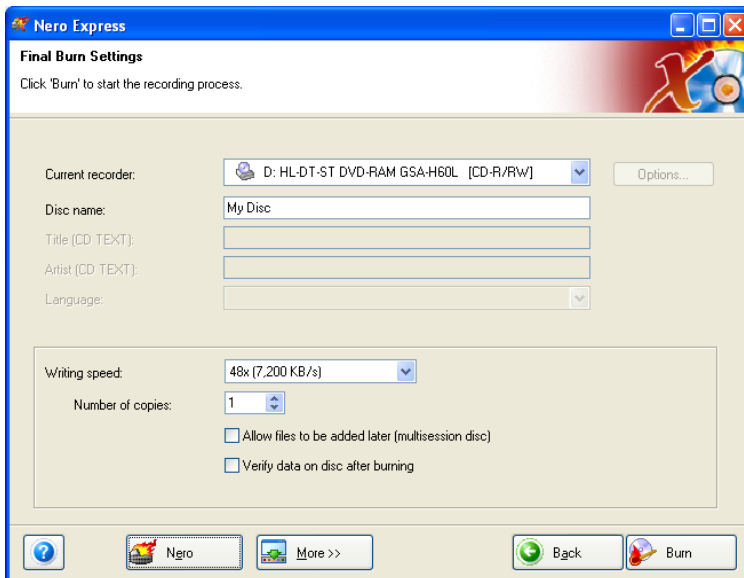
- ← Set to **poi**
- ← Set to **Feet and MPH**
- ← Set to **Express (Recommended)**

Then click **"Next"** and POI Loader will create a file called **"poi.gpi"** within the 'garmin' folder that you created on your desktop

Burn to CD-R/RW

Next you need to burn the '**garmin**' folder on to a CD-R/RW.

It is necessary to finalise the disc during this process. If you are using '**Nero**' then uncheck the box called "**Allow files to be added later (multisession disc)**"



For other brands of software it might be necessary to consult the manual or help file packaged with it, to determine how to finalise a disc.

Upload POI's to your navigation system

Select [NAV], then insert disc.

Press 'YES' when prompted to upload new "Custom POI" files

The new database will overwrite any existing database on your DNX system